

FIG. 10. Thunderstorm simulation at 2 hours. (90 min. forecast), a) verification, b) control. Vectors and contours as in Fig 5.

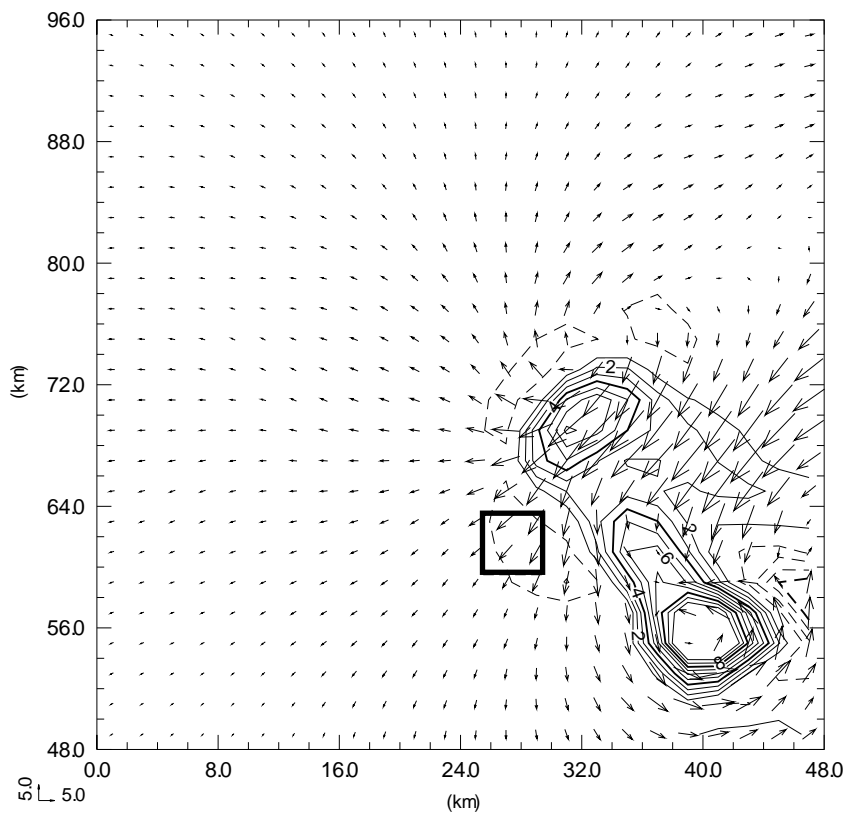


FIG. 11. Thunderstorm simulation at 2 hours, for single-step phase correction. Vectors and contours as in Fig 5.

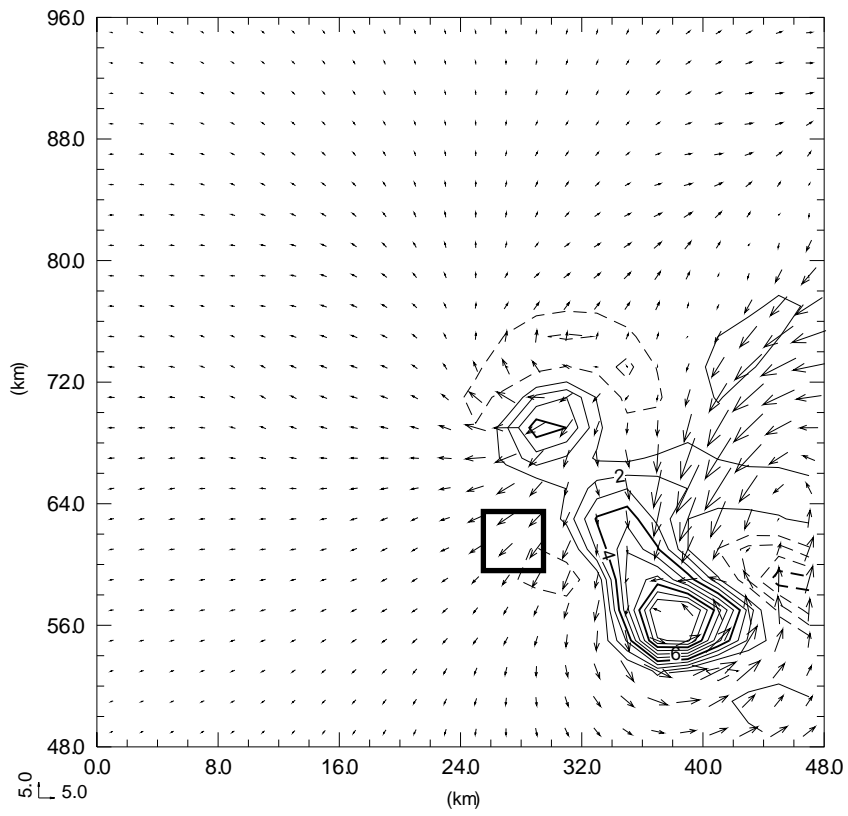


FIG. 12. Thunderstorm simulation at 2 hours, for multiple-step phase correction. Vectors and contours as in Fig 5.

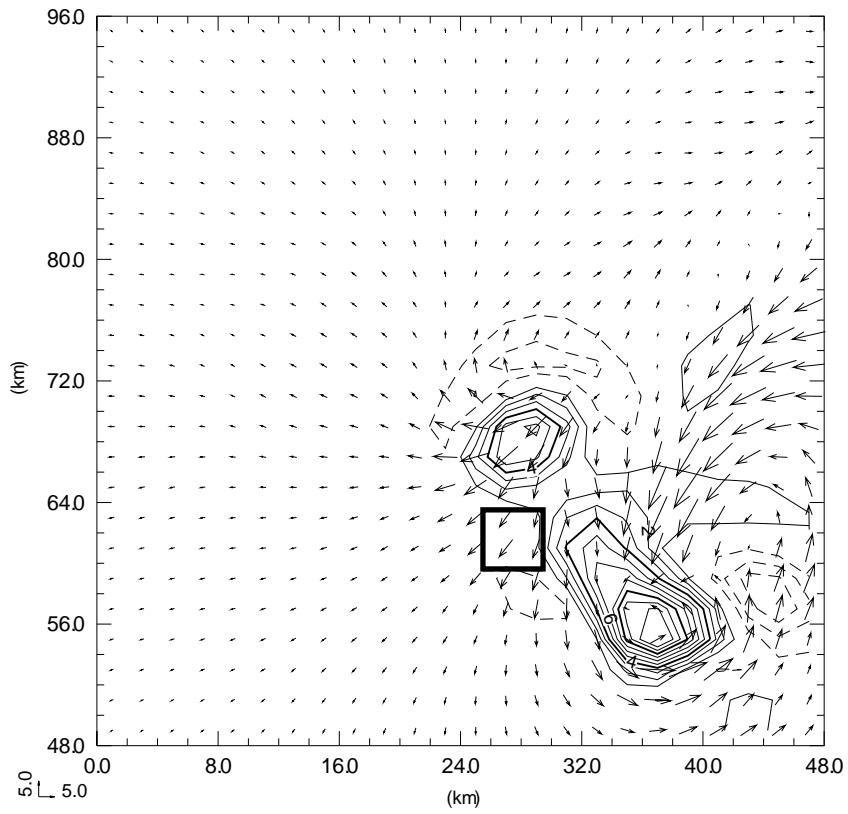


FIG. 13. Thunderstorm simulation at 2 hours, for the pseudo-wind advection phase correction. Vectors and contours as in Fig 5.

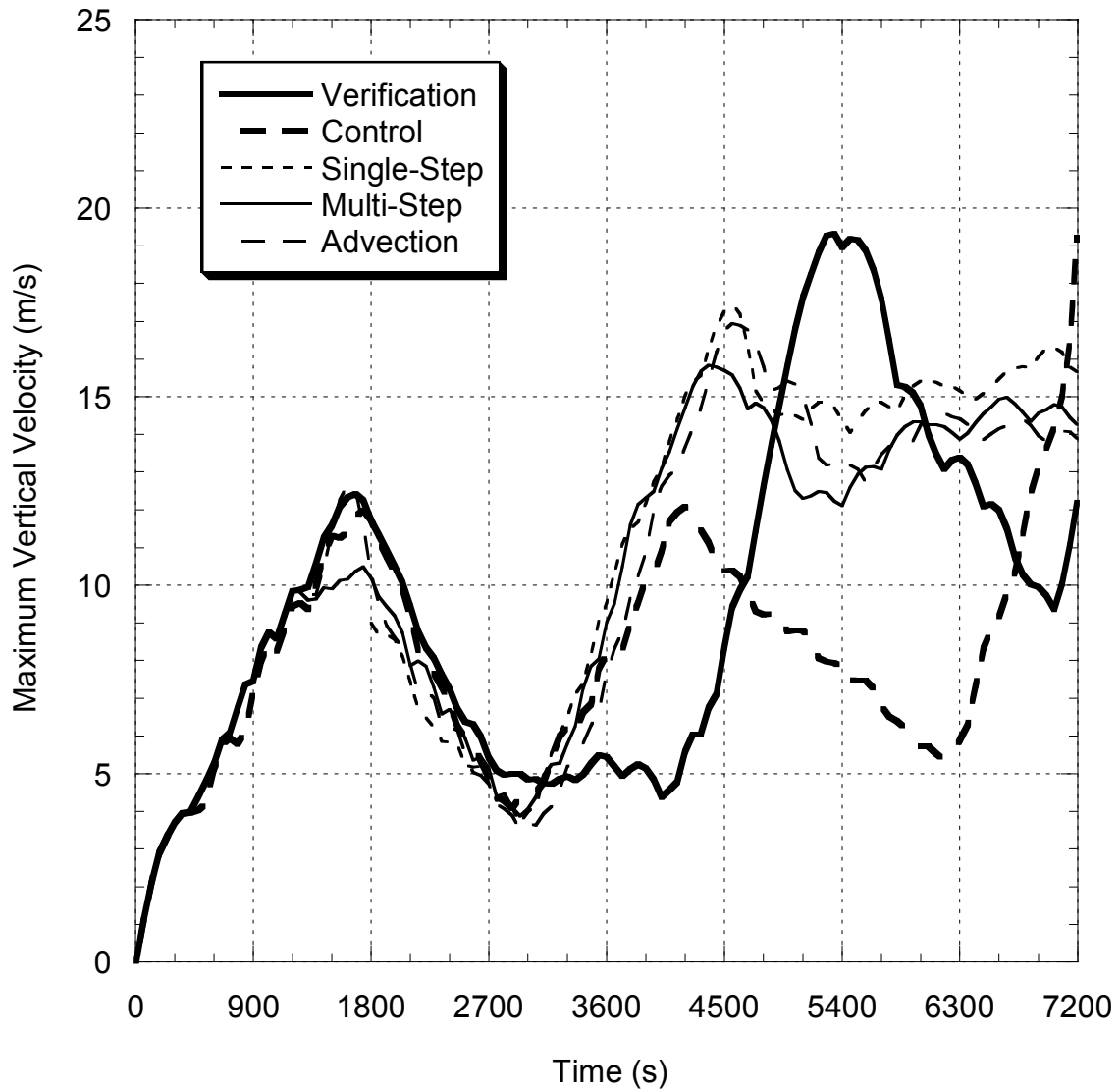


FIG. 14. Time-series of maximum vertical velocity in the domain. Bold line is verification, bold dashed line is the control run, dotted line is the single-step method, thin solid line is the multi-step method, and thin dashed line is the advection correction method.

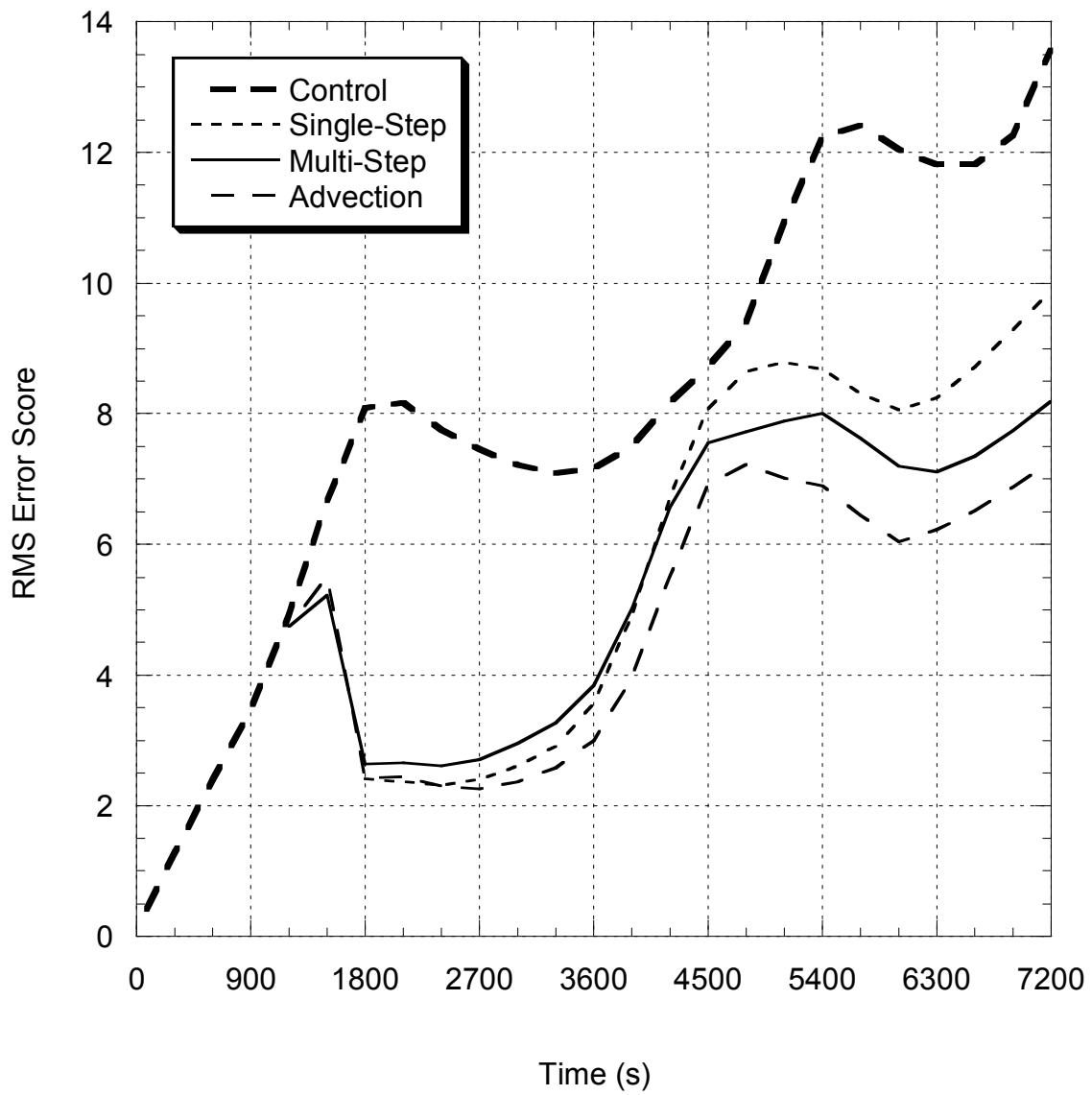


FIG. 15. Forecast RMS error score. See text, Eq. 11, for definition. Line textures as in Fig. 14.

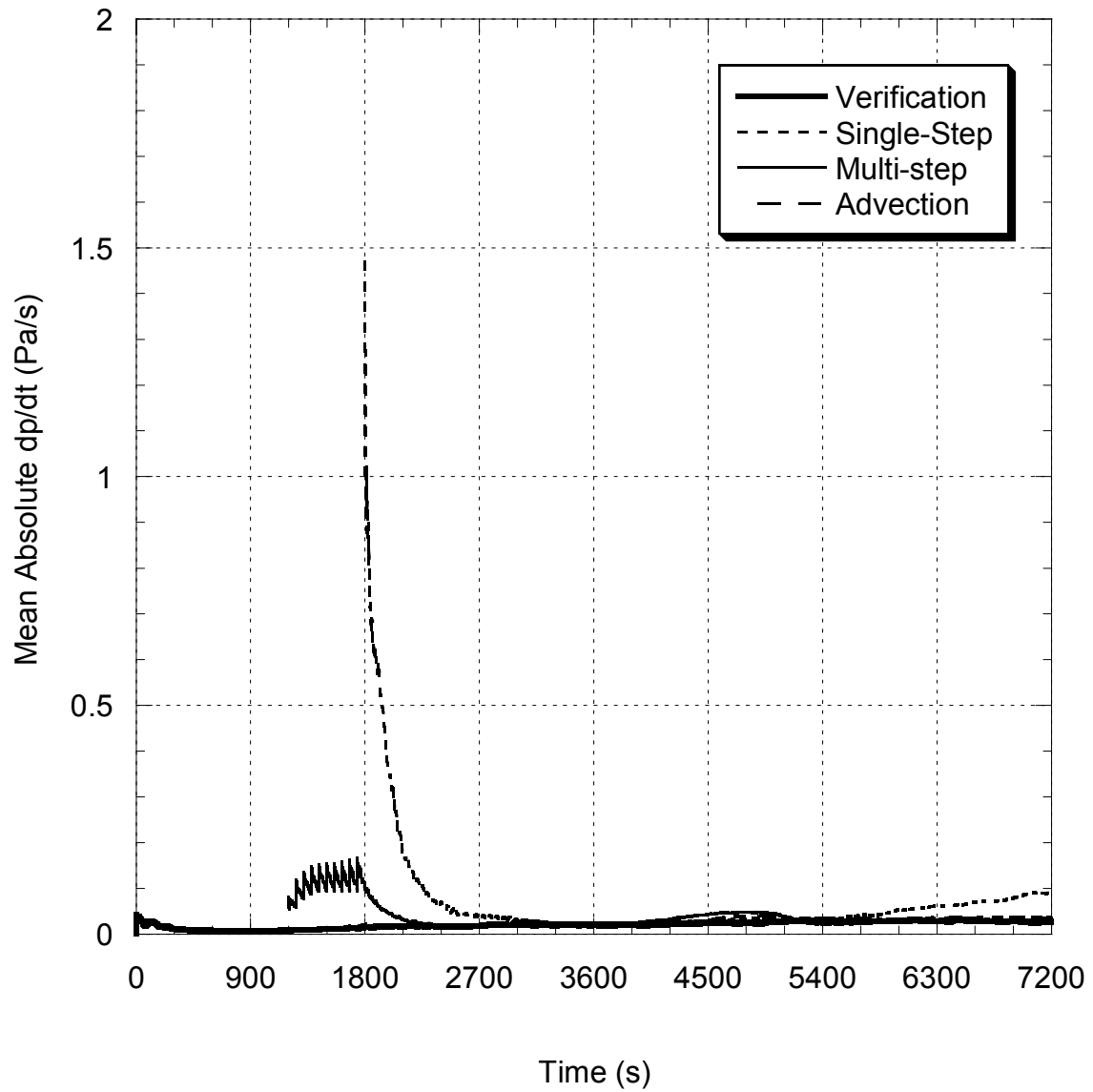


FIG 16. Time-series of domain-mean absolute pressure tendency for the verification run and the three forecast correction methods. Line textures as in Fig 14.